

Site risk assessment record

Berkshire
Buckinghamshire
Oxfordshire



Location: Padworth Common	Date of assessment: 04/05/16	Nearest postcode: RG7 3QE	Main entrance OS Grid Ref : SU 619 648
-------------------------------------	--	-------------------------------------	--

Hazards/hazardous events	Who is affected?	Typical outcome	Precautions	Risk Level LxH=RL
Uneven ground due to roots, stones and muddy paths causing slips, trips or falls	Public. BBOWT workers	Bruises, sprains, minor cuts and grazes	<ul style="list-style-type: none"> Warn of uneven ground to group, take care of footing. Wear suitable footwear 	Likely x Slight harm = slight
Thorny bushes (esp gorse) along paths and in work areas.	Public. BBOWT workers	Cuts and grazes, Puncture wounds, eye damage	<ul style="list-style-type: none"> Ensure paths are kept clear. Provide safety glasses if working in thorny area. 	Likely x harmful = moderate
There are several public footpaths, a public bridleway, permitted bridleway and a number of informal paths and tracks. All of the reserve is CROW access land.	Public. BBOWT workers	Injury to passer by from conservation work taking place	<ul style="list-style-type: none"> Warn people working on site. Erect suitable signs when work is being done. 	Unlikely x harmful = slight
Dead branches in trees. Dead standing trees – risk of falling down	Public. BBOWT workers	Head injuries, cuts and bruises	<ul style="list-style-type: none"> Conform to COP 31 Tree safety assessment. Ensure areas worked in are checked for dangerous trees. No work should be carried out in high winds 	Unlikely x harmful = slight
Irritable and poisonous plants such as bracken and Fungi.	Public. BBOWT workers	Spores are Carcinogenic. Poisoning from ingestion	<ul style="list-style-type: none"> Take suitable precautions when working in bracken infested areas in July/August/September. Refer to: Pulling Plants by Hand task risk assessment. Do not eat fungi, berries or other plant material. Wash hands after handling such material 	Unlikely x harmful = slight

	Slight harm	Harmful	Very harmful
Unlikely	Trivial	Slight	Moderate
Likely	Slight	Moderate	Substantial
Very likely	Moderate	Substantial	Intolerable

Stings from bees, wasps or hornets	Public BBOWT workers	Allergic reaction to stings	<ul style="list-style-type: none"> Be aware of any nests close by and do not get too close. All volunteers / staff should declare any known allergic reactions 	Unlikely x harmful = slight
Proximity to highway	BBOWT workers (incl contractors). motorists	Injury from contact with vehicles, or causing RTAs	<ul style="list-style-type: none"> No work carried out by staff with a chance of impacting on the highway. Use only certified contractors 	Unlikely x very harmful = moderate
Dry heathland sites are candidates for fire, through accidental ignition or arson. There have been several accidental burns/wildfires on this site.	Public. BBOWT workers	Burns or smoke inhalation	<ul style="list-style-type: none"> Work party bonfires must be closely monitored, and never lit in high winds or summer. Inform Fire Control 0118 945 2888 prior to lighting bonfires on site. Where practical, fire breaks should be considered and then maintained short. Advisory notices are an option if arson/campfires are seen. 	Likely x very harmful = substantial
Adders are known from this reserve.	Public. BBOWT workers	Infected bites, allergic reaction	<ul style="list-style-type: none"> Notify groups working of presence. Wear suitable clothing/boots when in heath 	Unlikely x harmful = slight
Pole mounted HV power lines cross south common. Lines may arc to earth through direct contact or spray drift. Metal objects may build up static charge.	Public. BBOWT workers (incl contractors)	Electrocution, power cuts	<ul style="list-style-type: none"> No work carried out by staff with a chance of impacting on the lines. Use only certified contractors. Do not park vehicle beneath lines. Kite flying prohibited. Report any inappropriate behaviour or damage to SSE, number on poles. 	Unlikely x very harmful = moderate
Underground services. There is a fuel pipeline across the common.	Public. BBOWT workers (incl contractors)	Fuel leaks, explosion, fire, disruption of supply, contamination.	<ul style="list-style-type: none"> Consult service plan before undertaking any digging/excavation in a vulnerable area. 	Unlikely x very harmful = moderate
There is a steep, wet gully on north common.	Public. BBOWT workers	Falls, getting stuck	<ul style="list-style-type: none"> Advise any workers in the area to be aware of the steep gullies, boggy conditions and stream banks. 	Unlikely x slight harm = minor
There is a pond on north common and some old gravel borrow pits that fill with rainwater in wet conditions.	Public. BBOWT workers	Drowning, getting stuck, falls.	<ul style="list-style-type: none"> Advise of need for care in placing feet, keep good balance. Wear suitable clothing/boots. See water safety assessment 	Unlikely x very harmful = moderate

	Slight harm	Harmful	Very harmful
Unlikely	Trivial	Slight	Moderate
Likely	Slight	Moderate	Substantial
Very likely	Moderate	Substantial	Intolerable

Ticks are known from bracken-rich parts of the reserve	Public. BBOWT workers	Infected bites or at worst Lyme's Disease	<ul style="list-style-type: none"> Long Trousers and sleeves should be worn in season. Carry tick removal tool on person or with First Aid kit. Check body over after visit esp waist, legs, armpits. Remove tick with a twist using tick removal tool, but ensure all mouthparts come free, if in doubt visit GP. Advise groups. 	Unlikely x harmful = slight
Dog faeces are present near main access point the site is widely used by dog walkers.	Public BBOWT workers	Disease such as Toxicara	<ul style="list-style-type: none"> Notices are in place. Dog bin at main entrance point by car park. Warn groups about presence of faeces, urge vigilance. Conform to CoP 15 	Likely x harmful = moderate
Barbed wire and plain wire fences on neighbouring land.	Public. BBOWT workers	Scratches or entanglement	<ul style="list-style-type: none"> Notify neighbours of fence condition. Ensure workers exercise caution in these areas. 	Unlikely x slight harm = minor
Wild animals' (incl rats') dung/urine, and dirty water may be present with the possibility of water borne disease	Public. BBOWT workers	Illness with leptospirosis or Weil's disease	<ul style="list-style-type: none"> Inform workers or groups to practice good personal hygiene, esp prior to eating. Conform to CoP 15 	Unlikely x harmful = slight
Antisocial behaviour including camping and arson have all occurred on this site.	Public. BBOWT workers	Injury from confrontation (see arson above)	<ul style="list-style-type: none"> Avoid confrontation, call police if suspect criminal activity 	Unlikely x harmful = slight
Flytipping regularly occurs in the main car park.	Public. BBOWT workers	Cuts or disease from contact with refuse	<ul style="list-style-type: none"> Contact WBC Waste team to arrange collection. If hazardous waste, EA should be notified. 	Unlikely x harmful = slight
South common perennially wet in many areas.	Public. BBOWT workers.	Falls, slips, trips, getting stuck.	<ul style="list-style-type: none"> Warn of wet ground to group, take care of footing. Wear suitable footwear. Inspect main paths on Common as required and repair as necessary. 	Likely x Slight harm = slight

Nearest telephone (landline): Nearby properties on Rectory Road or Reading Road.	Emergency telephone number 999 or 112	
--	---	--

	Slight harm	Harmful	Very harmful
Unlikely	Trivial	Slight	Moderate
Likely	Slight	Moderate	Substantial
Very likely	Moderate	Substantial	Intolerable

<p>Nearest A&E department: Royal Berkshire Hospital A&E, London Road, Reading, RG1 5AN Tel: 0118 322 7020</p> <p>Basingstoke & North Hants Hospital Aldermaston Rd, Basingstoke RG24 9NA Tel: 01256 473202</p> <p>Minor Injuries – West Berks Community Hospital, Rookes Way, Thatcham, RG18 3AS Tel: 01635 273 300</p>	<p>Type of access for emergency services (delete as appropriate) Pedestrian 2WD 4WD Air</p> <p>Depending on location</p>	<p>Access point/route for emergency services from road: Rectory Road (car park), North Common. Padworth Road, South Common.</p>	
<p>Assessment undertaken by: Simon Barnett</p>	<p>Position: Countryside Officer</p>	<p>Manager confirming assessment: Alex Cruickshank</p>	<p>Date for revision: July 2017</p>

Work identified from site risk assessment	By whom	Date completed
Carry out tree safety assessments	Tree Safety and Woodlands Officer	annual
Ensure safety notices are posted (livestock grazing, tree work, path works, contractors machinery present, flooding)	Reserves staff/ contractors	As required
Annual H&S audit of site infrastructure	LM (P&E) or LMO (Access)	Annual
Task/work party leaders convey relevant information to participants	Reserves staff	As required

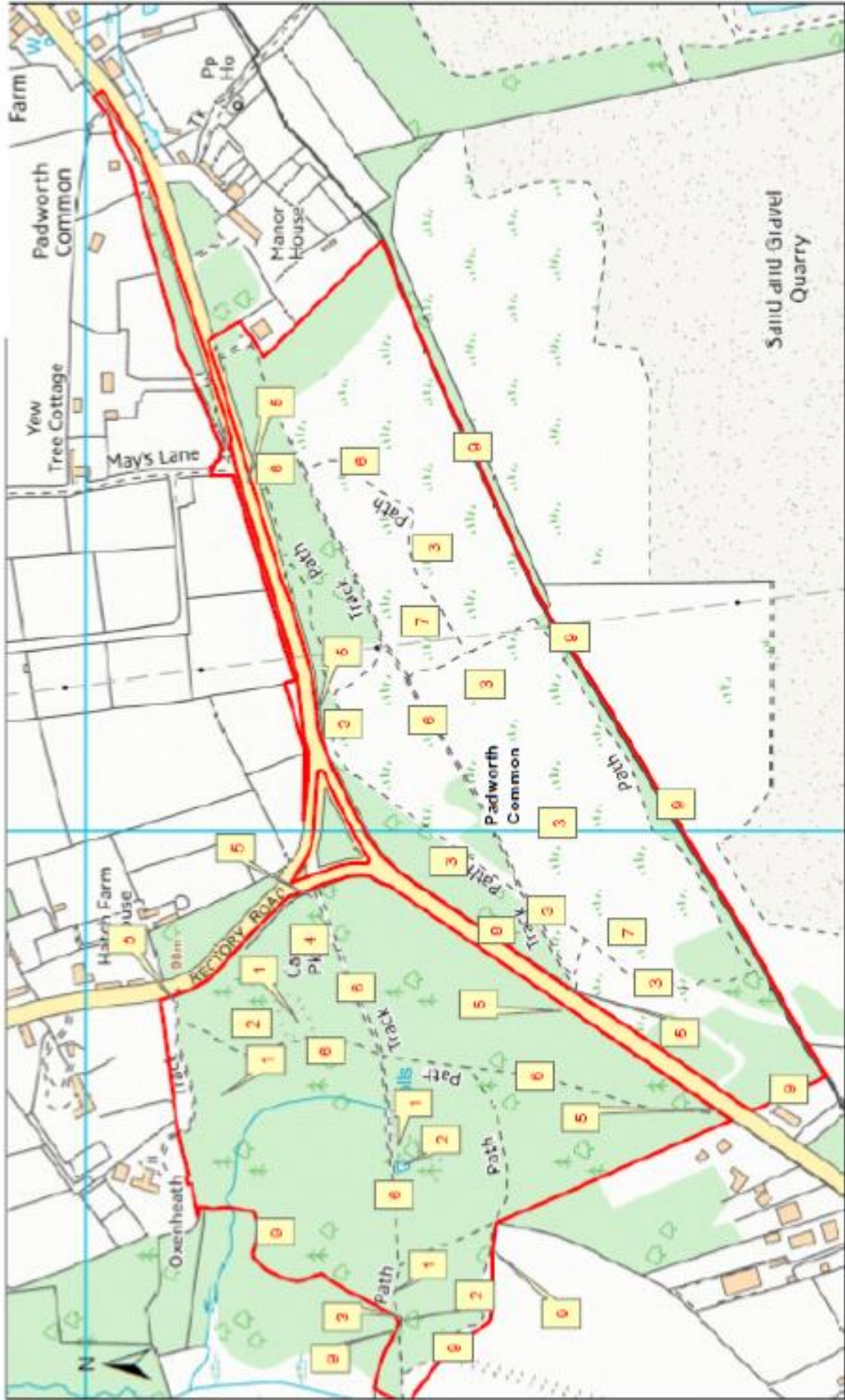
	Slight harm	Harmful	Very harmful
Unlikely	Trivial	Slight	Moderate
Likely	Slight	Moderate	Substantial
Very likely	Moderate	Substantial	Intolerable

This checklist is designed to assist in the production of Site Risk Assessments. For those hazards present, more specific information should be provided, e.g. location within site and precautions required entered on SRA form. **This list is not comprehensive. Map is located in reserves office.**

No.	Risk	Present		Recorded on map
		Yes	No	
1	Steep slopes and banks	Yes		1
2	Drowning risk – deep water [pools, streams, rivers]	Yes		2, various
3	Fall hazards – rock outcrops, buildings, building foundations		No	
4	Areas liable to flooding	Yes		Various
5	Areas of permanent soft ground	Yes		2
6	Areas of soft ground following rain	Yes		3
7	Uneven path / track surfaces	Yes		All
8	Uneven ground	Yes		2
9	Remote areas	Yes		Various
10	Dry weather fire hazard – heath, scrub, grass	Yes		All
11	Sun exposure – poor shade - burn / dehydration	Yes		Various
12	Site used for walking [Inc dogs]	Yes		All
13	Children playing	Yes		All
14	Site used for horse riding	Yes		Various
15	Site users include people with mobility problems	Yes		Various
16	Site history of abuse [drunks, vandals, drugs, needle stick injury]	Yes		4
17	Site history of staff and/or volunteer intimidation	Yes		Various
18	Fly-tipping	Yes		4
19	Unauthorised and/or authorised shooting [i.e. poaching/stalking]		No	
20	Unauthorised vehicles [cars and motorbikes]		No	
21	Difficult or restricted access / egress [esp. for heavy plant]	Yes		Various
22	Authorised vehicles	Yes		Various
23	Areas inaccessible to vehicles	Yes		Various
24	Former landfill site		No	
25	Proximity to public highway	Yes		5
26	Proximity to Public Rights of Way	Yes		6
27	Overhead service lines	Yes		7
28	Underground service lines	Yes		8, various
29	Barbed wire	Yes		9
30	Personal hygiene facilities		No	
31	Poisoning from blue / green algae		No	
32	Exposure to bracken [carcinogenic spores] (see CoP 15)	Yes		Various
33	Puncture wounds [blackthorn / hawthorn]	Yes		Various
34	Wild parsnip burns		No	
35	Giant hogweed burns (see CoP 15)		No	
36	Poisonous berries		No	
37	Poisonous fungi	Yes		All
38	Standing dead wood	Yes		All
39	Risk of Weils' disease (see CoP 15)	Yes		All
40	Site known for wasps	Yes		Various
41	Site known for bees	Yes		Various
42	Site known for hornets	Yes		Various
43	Site known for adders	Yes		Various
44	Site known for stray dogs	Yes		Various
45	Site known for ticks [Lyme disease] (see CoP 15)	Yes		All
46	Site known for allergens [pollen / spores]	Yes		All
47	Injury to pregnancy – exposure to lambs [listeria, chlamydia]		No	

Padworth Common SRA 2015 SU 619648

Berkshire
Buckinghamshire
Oxfordshire



© Crown copyright and database rights 2014 Ordnance Survey Licence Numbers: 10000551, APS Gelesky International and Ginterra Ltd. 2006 and Ginterra Ltd. 2010. Ordnance Survey Licence Number: 010001872. 1:4,500

Padworth Common emergency access



Berkshire
Buckinghamshire
Oxfordshire



© Crown copyright and database rights 2014 Ordnance Survey Licence Numbers: 100000001, APs. ©Clive's International and InfoTerra Ltd. 2010 and ©InfoTerra Ltd. 2010; eMapInfo Licence Number: 0100031073.
1:4,500